

# INCLUSION OF STAKEHOLDERS IN THE DESIGN PROCESS

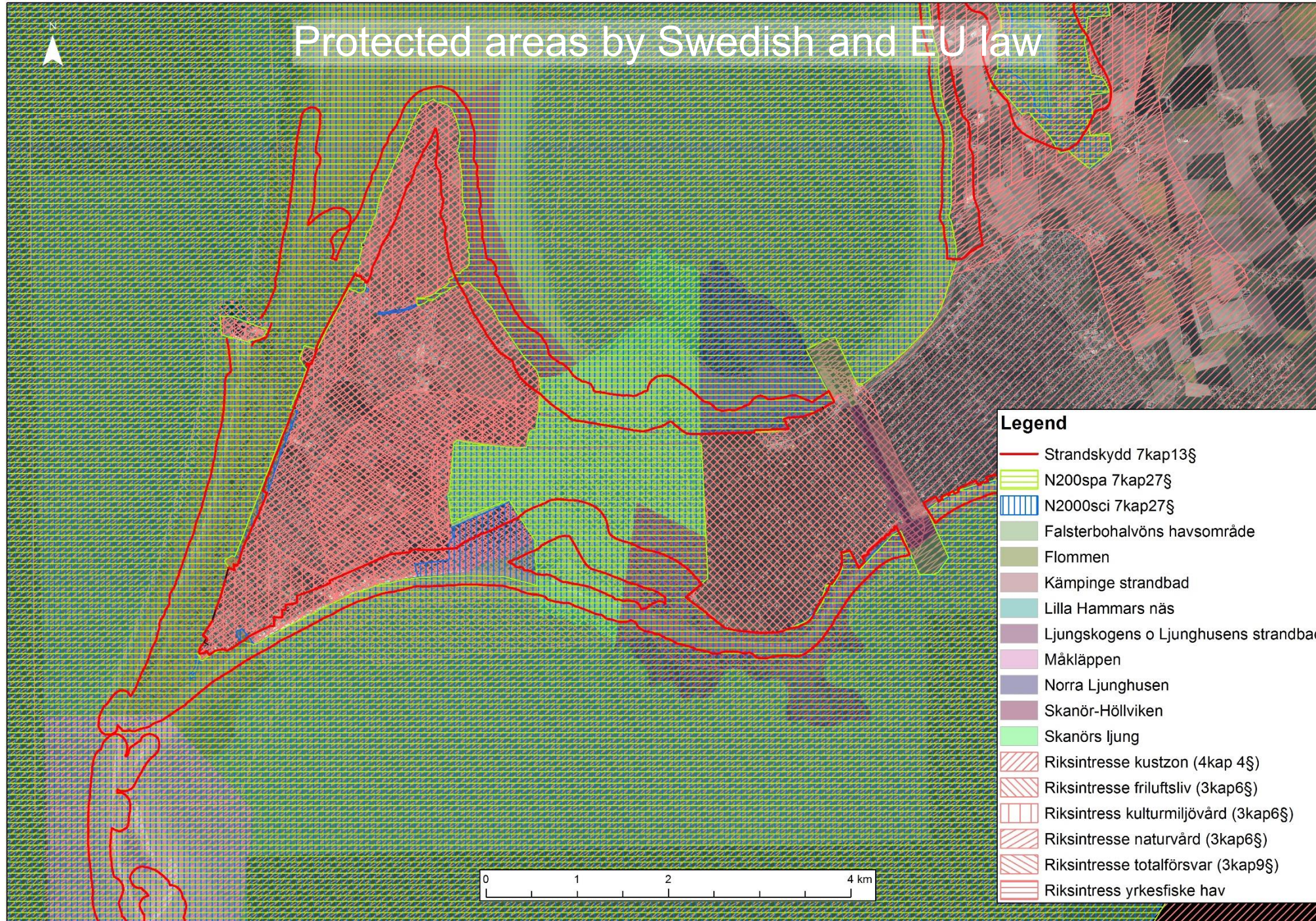
*ACTIVE PARTICIPATION AND FINDING THE BALANCE*

Sebastian Bokhari Irminger  
[sebastian.irminger@sweco.se](mailto:sebastian.irminger@sweco.se)  
+46-(0)72 216 35 03  
Dept. Coast and Rivers, Sweco





# Protected areas by Swedish and EU law







Home to approx. 20 000 people  
Value of private property, >4 billion Euro (>40 billion SEK)

Skanör

Höllviken

Falsterbo

Ljunghusen



Legend







# Design

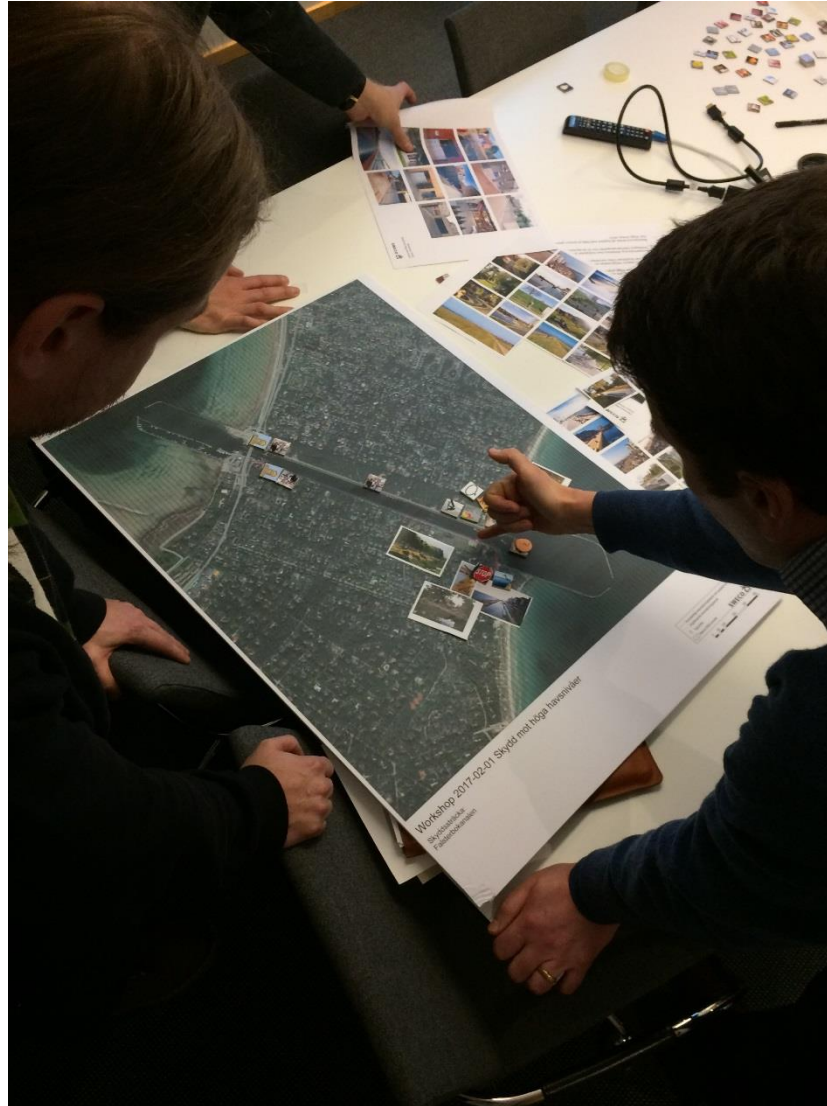
Many aspects to consider

- Stability and resistance
- Storm surge and winds
- Waves and erosion
- Maintenance
- Landscape
- Living environment
- Safety and health issues
- Cultural heritage and traditions
- Environmental and recreational values
- Accessibility
- Funding
- Etc., etc.
- **Conflicts of interest!**





# Engaging decision makers (politicians)





# Engaging decision makers

Workshop 2017-02-01 Skydd mot höga havsnivåer



Vypunkt 16

Vy från Kärleksstigen, blickande söderut mot Hamnvägen

"SKANDE MUR"  
TÄVLING



Bra med  
visuallisering

Vi klarar  
detta !

Ny kunskap  
under  
processen?  
Hur tillvaratas

Miljö- och  
Naturanpassade  
skydd som  
smälter in









